

M

T



MTD-2037 Diamond Table Base
38"W X 19"D X 26"H or 28 1/4"

MICHAEL TAYLOR DESIGNS



MTD-2037/26 Diamond Table Base
38"W X 19"D X 26"H

MTD-2037/28 Same As Above
38"W X 19"D X 28 1/4"H

For use as a console, specify 1 base for rectangular top 60"W X a minimum of 20"D

For use as a dining table, specify 2 bases for rectangular tops 96"W X 42"D or 120"W X 48"D

MTD CAST STONE FINISHES

Standard
Finishes



White



Natural



Latch



Light Latch

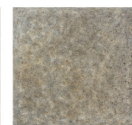
Premium
Finishes



English



Spanish



Florentine